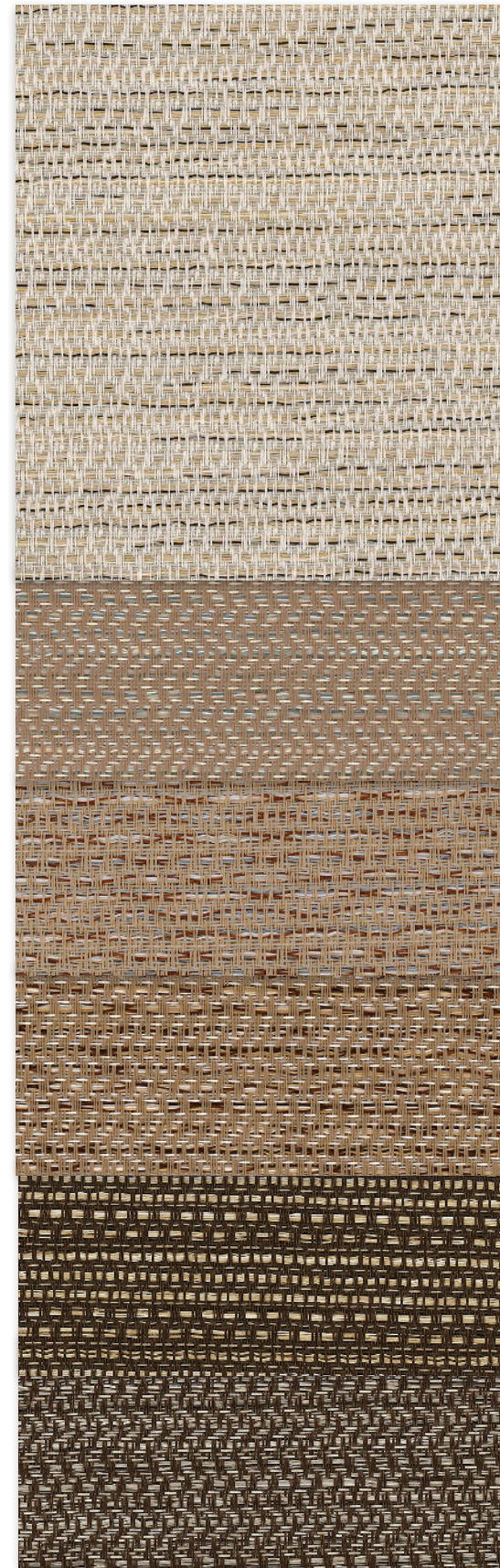


S Screen Naturals™

Decorative | 5% openness



000PYR
Pyrenees

000SIE
Sierra

000OLY
Olympus

000APP
Appalachian

000AND
Andes

000ADI
Adirondack



000DEN
Denali

000MAT
Matterhorn

000RAI
Rainier

000CAS
Cascade

000SHA
Shasta

000EVE
Everest

A New View on Texture

S Screen Naturals uses wrapped yarn bundles similar to Mermet's flagship S Screen line, but with a new woven structure that provides rich texture to the fabric. Special yarns were incorporated to give a subtle sheen to the fabric while enhancing the effect of natural daylight and mimicking the appearance of woven wood shades when backlit. This results in a uniquely textured shade fabric that transmits beautifully controlled lighting and perfectly complements the natural colors in ones home.



Beauty and Strength

With its decorative construction utilizing fiberglass core yarns, S Screen Naturals offers exceptional durability and dimensional stability— making it well suited for common interior and exterior building environments.

- HPD available
- RoHS compliant
- GREENGUARD Gold
- Fire rated



5%

000CAS
Cascade



5%

000CAS
Cascade



S Screen Naturals™

Decorative | 5% openness

Specifications

Item Number	001705
Product Category	Decorative
Fabric Style	Fancy Weave
Openness Factor	5%
Composition	33.6% Fiberglass / 59.6% Vinyl / 6.8% Polyester
UV Blockage	Approximately 95%
Standard Packaging	Rolls of 23 ly (21 lm)
Width	98 in (250 cm)
Weight	15.0 oz/yd ² (510 g/m ²) ±5%
Thickness	0.042 in (1.06 mm) ±5%

Classifications

Fire Classifications	NFPA 701-10 TM#1, California U.S. Title 19, CAN/ULC-S109-03 Small Flame Test
Bacterial and Fungal Resistance Environment	ASTM E2180, ASTM G21 RoHS - Lead Free, GREENGUARD Gold
Acoustical Performance	NRC 0.05, SAA: 0.07

Fabrication

Cutting: Cold, Ultrasonic or Crush | **Welding:** Radio Frequency, High Frequency, Impulse, Hot Air or Wedge
We recommend testing all cutting and welding methods prior to use to confirm they meet your individual fabric specifications.

S Screen Naturals™

ITEM COLOR

000PYR	Pyrenees
000SIE	Sierra
000OLY	Olympus
000APP	Appalachian
000AND	Andes
000ADI	Adirondack
000DEN	Denali
000MAT	Matterhorn
000RAI	Rainier
000CAS	Cascade
000SHA	Shasta
000EVE	Everest

FABRIC

Rs %	thermal		optical	
	Total Solar	As %	Ts %	Rv %
63	18	19	68	18
46	39	15	48	13
35	51	14	36	12
40	46	14	41	13
18	74	8	19	8
20	71	9	21	9
58	26	16	63	15
54	30	16	58	15
37	51	12	38	10
43	45	12	46	11
35	54	11	36	9
31	59	10	32	9

FABRIC + GLASS

commercial		residential	
SHGC% Improvement		SHGC	
Interior	Exterior	Interior	Exterior
53	74	0.32	0.17
39	76	0.41	0.15
32	76	0.46	0.16
34	76	0.44	0.16
24	79	0.53	0.14
24	79	0.52	0.14
47	76	0.34	0.15
45	76	0.37	0.16
34	79	0.45	0.14
37	79	0.42	0.14
32	79	0.46	0.14
29	79	0.47	0.14

Warranty

5 Year Exterior & 10 Year Interior

Care & Handling

Remove dust with vacuum cleaner or compressed air. Do not scrub. Do not use solvents or any abrasive substance which might damage the coating of the fabric. Clean with a sponge or a soft brush dipped in soapy water using mild detergent. Rinse with clean water. Leave the blind down until completely dry. You can also very gently rub the fabric with a clean white pencil eraser to remove small stains.

Mermet Corporation

5970 N. Main Street ■ Cowpens, SC 29330
 Ph 1.866.902.9647 ■ info@mermetusa.com



mermetusa.com

The fabric performance tests were conducted in accordance with ASTM E891 & ASTM E903-96: Total Solar Transmittance (Ts), Total Solar Reflectance (Rs), Total Solar Absorbance (As), Visible Reflectance (Rv), and Visible Transmission (Tv). Glass performance tests for Solar Heat Gain Coefficient (SHGC) were conducted using the Lawrence Berkeley National Laboratory Window NFRC certified software. SHGC % improvement for commercial applications is based on a standard commercial glass makeup of Double Glazing 6 mm / 1/2" air / 6 mm with low E on surface #2. SHGC for residential applications is based on a default residential glass makeup of 3mm clear glass / 1/2" air / 3mm clear glass. Results for SHGC were obtained using the center of glass. Acoustical performance was tested in accordance with ASTM C423-09a: NRC is Noise Reduction Coefficient, SAA is Sound Absorption Average. For up-to-date test results, performance specifications and larger samples, contact the Mermet Technical Department at: www.mermetusa.com