



Sustainable | 5% openness

# GreenScreen® Nature™



## Specifications

Item Number	011300
Product Category	Sustainable
Fabric Style	Mock Leno Weave
Openness Factor	5%
Composition	100% Fiberglass
UV Blockage	Approximately 95%
Standard Packaging	Rolls of 55 ly (50 lm)
Width	94.5 in (240 cm)
Weight	5.10 oz/yd² (174 g/m²) ±5%
Thickness	0.010 in (0.24 mm) ±5%

## Classifications

Fire Classifications	NFPA 701-10 TM#1, California U.S. Title 19, CAN/ULC-S109 Small & Large Scale
Bacterial & Fungal Resistance	ASTM E2180, ASTM G21
Environment	RoHS - Lead Free, GREENGUARD Gold
Acoustic	NRC 0.10, SAA 0.11

## Fabrication

**Cutting:** Rotary Knife or Crush | **Welding:** Radio-Frequency, High Frequency, Impulse, Hot Air or Wedge  
 May require the use of welding tape. Please contact Mermet for more information regarding our welding tape product line. We recommend testing all cutting and welding methods prior to use to confirm they meet your individual fabric specifications.



ITEM	COLOR
000410	Sable
000440	Charcoal
000441	Dark Grey
000349	Light Grey
000348	Pearl
000319	Linen
00B119	White

## Warranty

5 Year Interior

## Care & Cleaning

Regular light dusting with a feather duster is suggested. A hand-held vacuum with low suction may also be used. When vacuuming, avoid pulling or stretching the fabric. Rigorous vacuuming is not recommended since this could distort the fabric. Alternatively, dirt and debris can be blown away using compressed air or hand-held air dryer on the cool setting. Alternatively, a dry chemical sponge may also be used for spot cleaning.

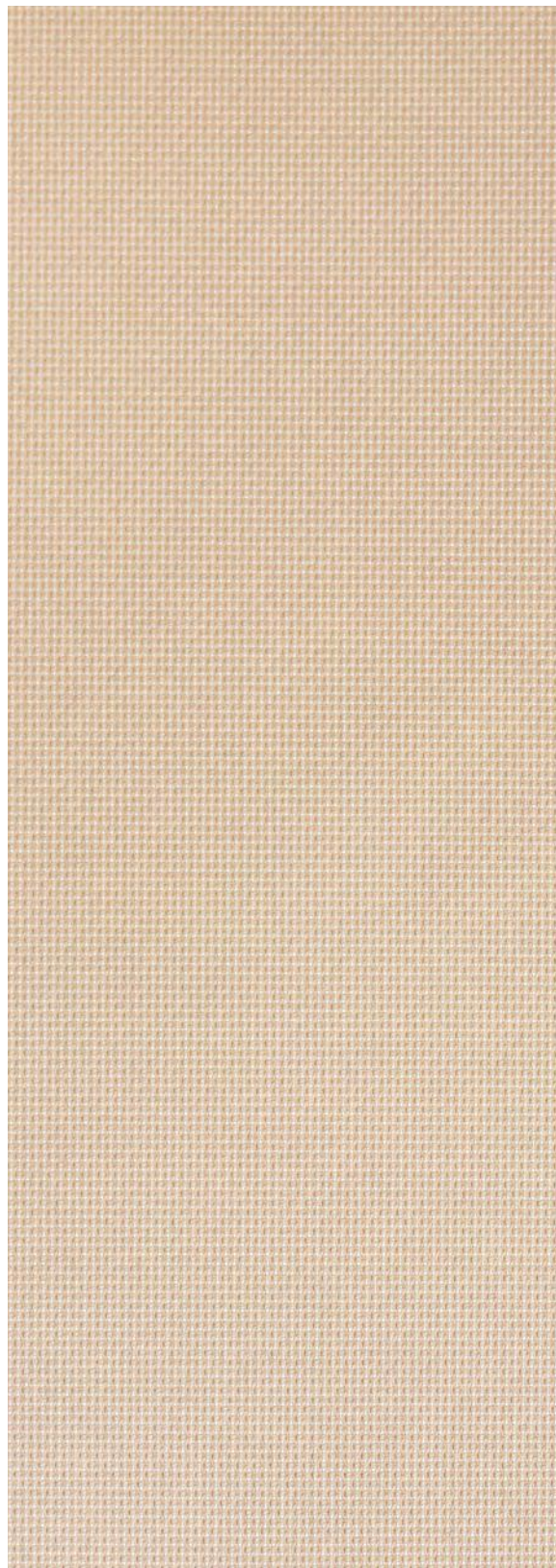
**Mermet Corporation**  
 5970 N. Main Street ■ Cowpens, SC 29330  
 Ph 1.866.902.9647 ■ info@mermetusa.com

[mermetusa.com](http://mermetusa.com)

FABRIC					FABRIC + GLASS	
thermal			optical		commercial	residential
Rs   %	As   %	Ts   %	Rv   %	Tv   %	SHGC % Improvement	SHGC
49	24	27	48	24	37	0.42
6	90	4	6	4	16	0.58
13	79	8	11	6	18	0.55
35	47	18	31	14	29	0.48
55	15	30	54	27	42	0.40
58	11	31	60	30	45	0.38
61	4	35	65	34	45	0.37

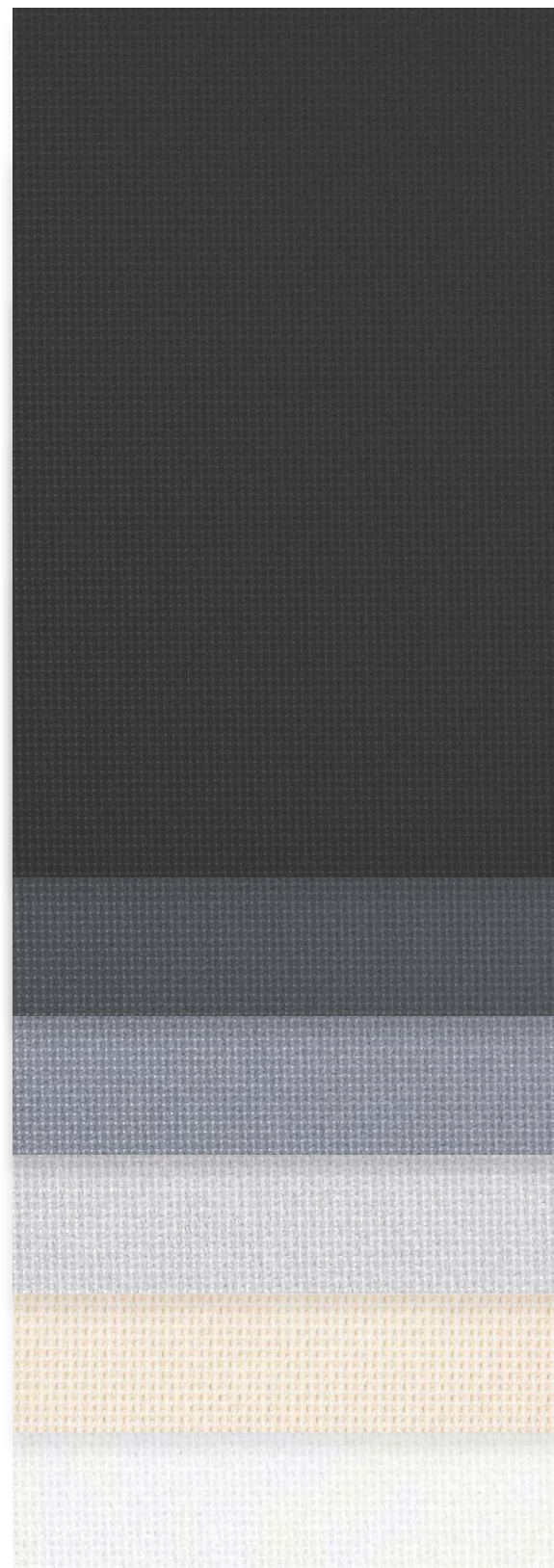
The fabric performance tests were conducted in accordance with ASTM E891 & ASTM E903-96: Total Solar Transmittance (Ts), Total Solar Reflectance (Rs), Total Solar Absorbance (As), Visible Reflectance (Rv), and Visible Transmission (Tv). Glass performance tests for Solar Heat Gain Coefficient (SHGC) were conducted using the Lawrence Berkeley National Laboratory Window NFRC certified software. SHGC % improvement for commercial applications is based on a standard commercial glass makeup of Double Glazing 6mm / 1/2" air / 6mm with low E on surface #2. SHGC for residential applications is based on a default residential glass makeup of 3mm clear glass / 1/2" air / 3mm clear glass. Results for SHGC were obtained using the center of glass, and results are based on the fabric being placed on the interior of the glass. Acoustical performance was tested in accordance with ASTM C423-09a: NRC is Noise Reduction Coefficient; SAA is Sound Absorption Average. For up-to-date test results, performance specifications and larger samples, contact the Mermet Technical Department at: [www.mermetusa.com](http://www.mermetusa.com).





5%

000410 | Sable


 000440  
Charcoal

 000441  
Dark Grey

 000349  
Light Grey

 000348  
Pearl

 000319  
Linen

 00B119  
White

## A Product of Our Environment

Woven from 100% fiberglass yarns, GreenScreen Nature recyclable shade fabrics are light on the planet yet high on performance. The natural fiberglass material used for GreenScreen Nature's construction provides industry leading achievement for flame resistance, smoke emissions, antimicrobial control, ease of cleaning, and dimensional stability. GreenScreen Nature is a smart, eco-friendly shade solution that not only increases the energy efficiency of buildings, but decreases overall resource demands of the planet.



Minimal ingredients.  
Maximum performance.

- **100% Recyclable**
- **PVC-Free / Halogen-Free**
- **Lightweight, 100% fiberglass construction**
- **Inherently fire resistant**
- **Red List compliant with HPD available**