

Sustainable | 3% openness

GreenScreen Evolve®



Specifications

Item Number 003503
 Product Category Sustainable
 Fabric Style Warp Knit
 Openness Factor 3%
 Composition 100% Polyester & 78% Recycled Content
 UV Blockage Approximately 97%
 Standard Packaging Rolls of 50 ly (46 lm)
 Width 118 in (300 cm)
 Weight 8.85 oz/yd² (300 g/m²) ±5%
 Thickness 0.029 in (0.74 mm) ±5%

Classifications

Fire Classifications NFPA 701-10 TM#1, California U.S. Title 19
 Bacterial & Fungal Resistance ASTM E2180, ASTM G21
 Environment RoHS - Lead Free, GREENGUARD Gold, Cradle to Cradle Certified™ - Bronze
 Acoustic NRC 0.20, SAA 0.20

Fabrication

Cutting: Cold, Ultrasonic or Crush | **Welding:** Radio-Frequency, High Frequency, Impulse, Hot Air or Wedge
 May require the use of welding tape. Please contact Mermet for more information regarding our welding tape product line.
 We recommend testing all cutting and welding methods prior to use to confirm they meet your individual fabric specifications.



ITEM COLOR

00QS37 Wind
 00QS26 Storm
00QS19 Rain
 00QS21 Shadow
00QS22 Shale
 00QS35 Haze
00QS38 Natural
 00QS23 Light
00QS39 Cloud

Warranty

Care & Handling

Mermet Corporation
 5970 N. Main Street ■ Cowpens, SC 29330
 Ph 1.866.902.9647 ■ info@mermetusa.com

mermetusa.com

Rs %	FABRIC		optical		FABRIC + GLASS	
	thermal Total Solar As %	Ts %	Rv %	Tv %	commercial SHGC % Improvement	residential SHGC
62	17	21	61	19	47	0.34
41	45	14	19	5	24	0.46
51	31	18	38	11	34	0.41
47	32	21	35	14	32	0.43
54	25	21	46	16	37	0.39
61	17	22	58	19	45	0.35
63	14	23	63	22	47	0.34
66	11	23	68	23	50	0.32
69	8	23	71	23	53	0.30

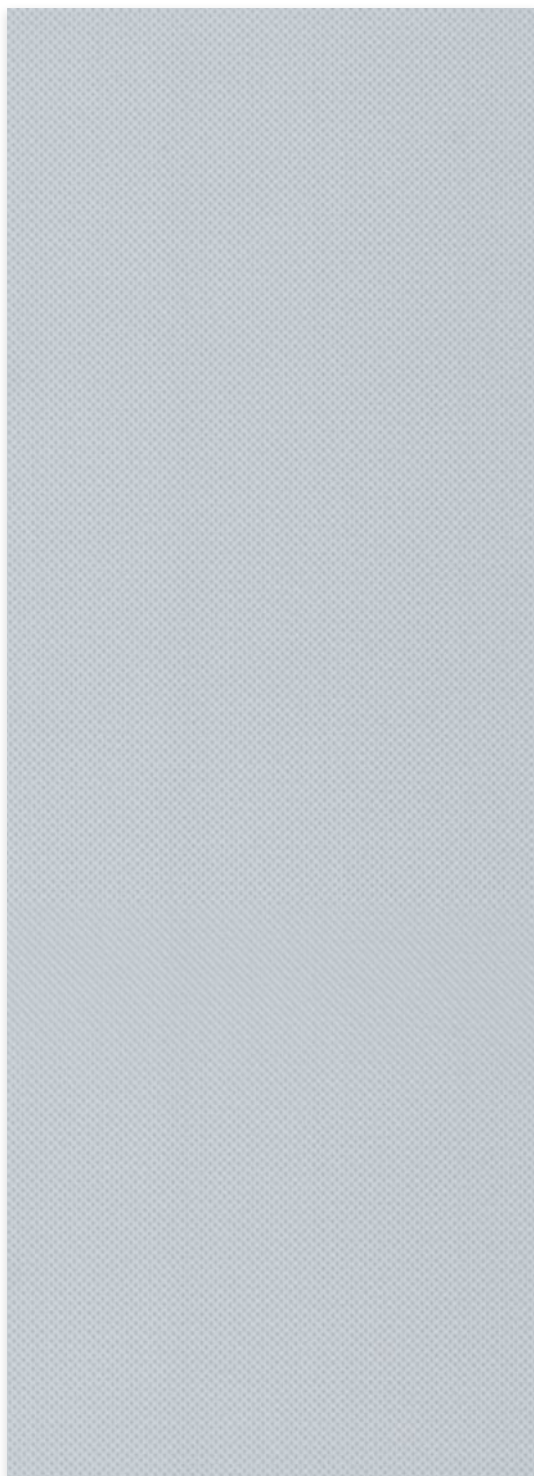
5 Year Interior

Regular light dusting with a feather duster is suggested. A hand-held vacuum with low suction may also be used. When vacuuming, avoid pulling or stretching the fabric. Rigorous vacuuming is not recommended since this could distort the fabric. Alternatively, dirt and debris can be blown away using compressed air or hand-held air dryer on the cool setting.

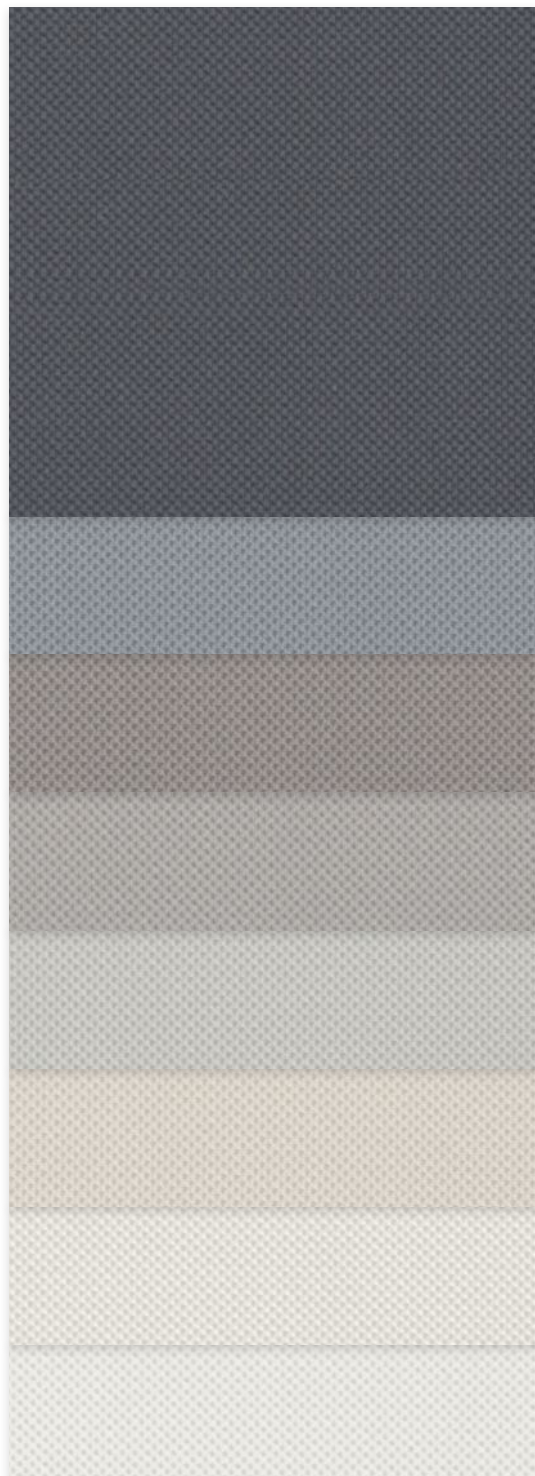
The fabric performance tests were conducted in accordance with ASTM E891 & ASTM E903-96: Total Solar Transmittance (Ts), Total Solar Reflectance (Rs), Total Solar Absorbance (As), Visible Reflectance (Rv), and Visible Transmission (Tv). Glass performance tests for Solar Heat Gain Coefficient (SHGC) were conducted using the Lawrence Berkeley National Laboratory Window NFRC certified software. SHGC % improvement for commercial applications is based on a standard commercial glass makeup of Double Glazing 6 mm / 1/2" air / 6 mm with low E on surface #2. SHGC for residential applications is based on a default residential glass makeup of 3 mm clear glass / 1/2" air / 3 mm clear glass. Results for SHGC were obtained using the center of glass. Acoustical performance was tested in accordance with ASTM C423-09a: NRC is Noise Reduction Coefficient, SAA is Sound Absorption Average. For up-to-date test results, performance specifications and larger samples, contact the Mermet Technical Department at: www.mermetusa.com.



Sustainable | 3% openness



00QS37 | Wind



00QS26
Storm

00QS19
Rain

00QS21
Shadow

00QS22
Shale

00QS35
Haze

00QS38
Natural

00QS23
Light

00QS39
Cloud

Zero Waste Designer Shade Fabric

GreenScreen Evolve designer shade fabrics bring elegance, sustainability and control to every facet of the façade. GreenScreen Evolve is a 100%, non-pvc warp knit polyester shade fabric that contains a minimum of 78% Repreve® fibers made from 100% recycled post-industrial fiber and consumer plastic waste. The main differentiating factors for Evolve is its unique diamond knit pattern and modern color palette, custom selected to provide a higher level of clarity to the outside.



- 100% Recyclable-Zero Waste Product
- PVC-Free
- Cradle to Cradle Certified™ Bronze
- Contains up to 78% Repreve® fibers, made from 100% recycled post-industrial and consumer plastic waste
- Diamond knit pattern for beautiful views
- Made in the USA
- Red List compliant with HPD available