



SHEERWEAVE
BY PHIFER®

BASIC
3% / 5%

WEAVING
EXCELLENCE
WITH
INNOVATION



Code	Color	SOLAR OPTICAL PROPERTIES				SHGC/G VALUE g-tot (glass & blind)	
		TS	RS	AS	TV	SINGLE 1/4 CL	INSULATING 1 HA
BASIC 3%							
P02	White	15	64	21	16	0.29	0.22
P04	White/Bone	12	58	30	11	0.32	0.23
P05	White/Platinum	8	50	42	8	0.36	0.25
V21	Charcoal	1	4	95	2	0.60	0.37
V22	Charcoal/Gray	1	8	91	2	0.57	0.36
V24	Charcoal/Chestnut	1	5	94	1	0.58	0.37
BASIC 5%							
P02	White	19	68	13	17	0.29	0.22
P04	White/Bone	16	60	24	14	0.32	0.23
P05	White/Platinum	11	53	36	11	0.36	0.25
V21	Charcoal	6	4	90	6	0.61	0.37
V22	Charcoal/Gray	7	9	84	7	0.58	0.36
V24	Charcoal/Chestnut	7	6	87	8	0.60	0.37



PROTECTION THAT LIVES ON 
MICROBAN[®]
 Microban[®] antimicrobial protection inhibits the growth of stain-causing bacteria, mold and mildew on the shade.



PRODUCT CERTIFIED FOR
 LOW CHEMICAL EMISSIONS
 UL.COM/GG
 UL 2818



MIF Seal of Approval



Safe Use



Flame Retardant



Energy Saving



Printable



Noise Reduction



TackLess Technology



10
YEAR
Interior Warranty



5
YEAR
Exterior Warranty

TS = Solar Transmittance
 RS = Solar Reflectance
 AS = Solar Absorptance
 TV = Visual Transmittance

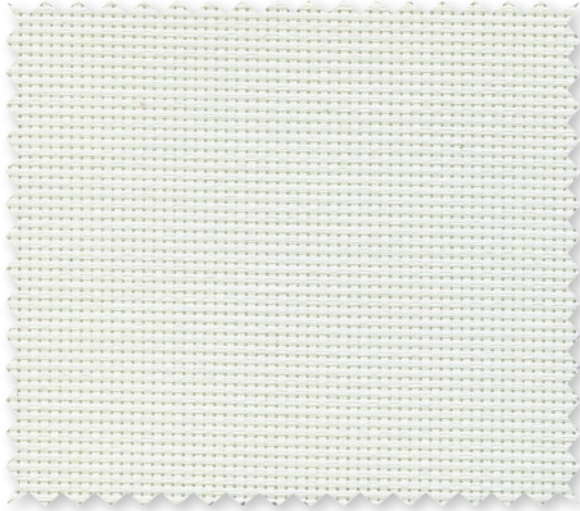
SHGC = Solar Heat Gain Coefficient

1/4 CL = 1/4" Clear Glass
 1 HA = 1" Heat Absorbing Glass

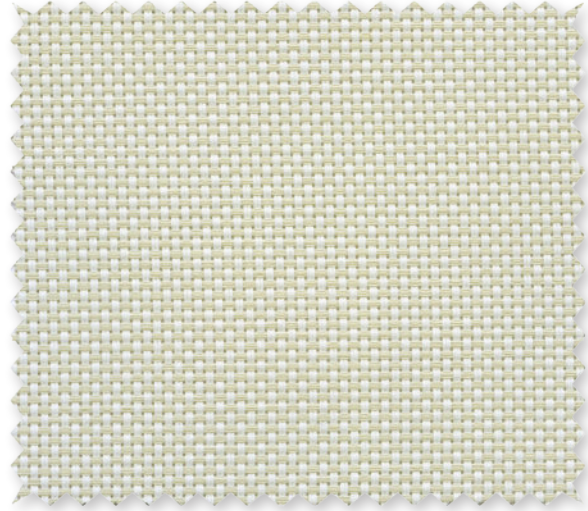
Fabrics Installed Internally
 Zero-Degree Profile Angle

For additional performance values, test references and technical definitions visit us at www.phifer.com.

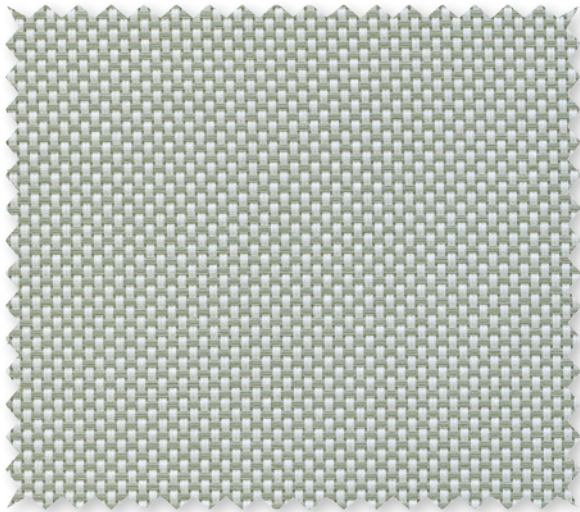
P02 **White**



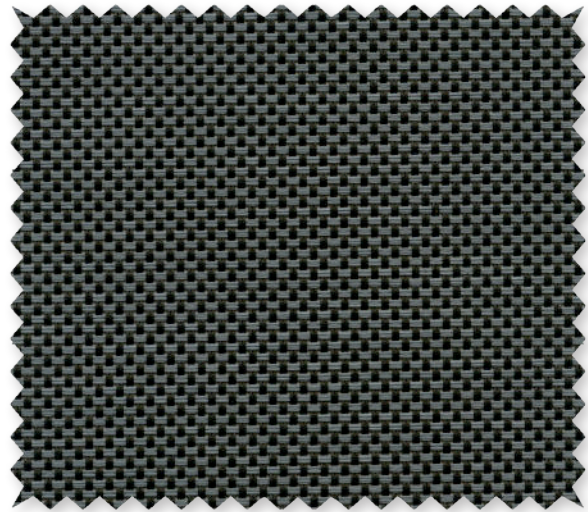
P04 **White/Bone**



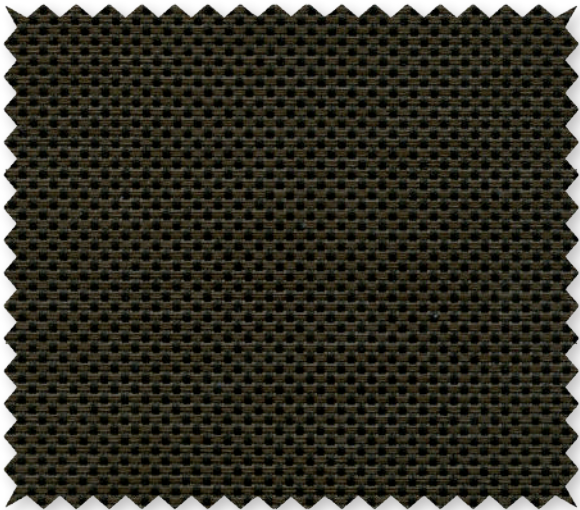
P05 **White/Platinum**



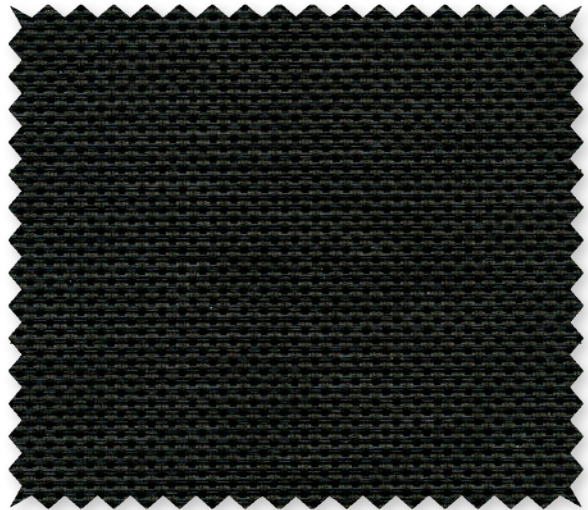
V22 **Charcoal/Gray**



V24 **Charcoal/Chestnut**



V21 **Charcoal**



*Colors may vary based on individual computer settings and should only be used for general reference.

STYLE BASIC 3% / 5% SPECIFICATIONS

With all the benefits, certifications, and technical specifications you have come to expect, SheerWeave BASIC is uniquely designed for the demanding and competitive commercial market and is an ideal choice for your spec-driven projects. A more robust fiberglass core yarn gives SheerWeave BASIC the added durability high traffic areas and public spaces require. Suitable for all types of interior window shade applications, SheerWeave BASIC is an economical alternative to traditional solar screen fabrics. BASIC 3% has exceptional sound absorbing performance for an added acoustical benefit. SheerWeave BASIC fabrics can also be used in exterior shading systems.

FIRE CLASSIFICATION	California U.S. Title 19 (small scale)	NFPA 701 TM#1 (small scale)
	NFPA 101 (Class A Rating)	IBC Section 803.1.1 (Class A Rating)
	BS 5867 Part 2 Type B Performance	NFPA 701 TM#2 (large scale)
	CAN/ULC-S 109 (large and small scale)	CAN/CGSB2-4.162-M80

Fire classifications are subject to change. Please go to phifer.com for the most current information.

BACTERIA AND FUNGAL RESISTANCE	ASTM E 2180	ASTM G21	ASTM G22	AATCC30 Part 3	ASTM D 3273
	GREENGUARD Mold and Bacteria Standard ASTM 6329 includes Microban antimicrobial additives				

ENVIRONMENTAL CERTIFICATION	GREENGUARD	GREENGUARD Gold
	Certified to these standards for low chemical emissions into indoor air during product usage	

SAFE USE	RoHS/Directive 2002/95/EC	REACH (EC 1907/2006) compliant
	ANSI/WCMA A 100.1-2007 for lead content	
	US Consumer Product Safety Commission Section 101	

WARRANTY	10-year interior	5-year exterior
-----------------	------------------	-----------------

ACOUSTICAL PERFORMANCE	NRC (Noise Reduction Coefficient) and SAA (Sound Absorption Average) tested in accordance with ASTM C423-09a	
-------------------------------	--	--

UV PROTECTION	Seal of Approval by the Melanoma International Foundation (MIF) for effectiveness in preventing sun damage to the skin or eyes	
----------------------	--	--

TRACKLESS	TrackLess Technology minimizes the fiberglass yarns' inherent tendencies to track when being rolled up in a shade. With TrackLess Technology these same fabrics now track less, roll up straighter and reduce shade fabrication time.	
------------------	---	--

BASIC	3%	5%
WIDTHS	98" 248.9 cm	98" 248.9 cm
ROLL LENGTH	30 Linear Yards 27.4 Linear Meters	30 Linear Yards 27.4 Linear Meters
COMPOSITION	38% Fiberglass 62% Vinyl on Fiberglass	38% Fiberglass 62% Vinyl on Fiberglass
MESH WEIGHT	16.4 oz/yd ² 556 g/m ²	14.1 oz/yd ² 478 g/m ²
FABRIC THICKNESS	0.025 in 0.64 mm	0.022 in 0.56 mm
OPENNESS FACTOR	Approximately 3%	Approximately 5%
UV BLOCKAGE	Approximately 97%	Approximately 95%
ACOUSTICAL VALUE	NRC .60 / SAA .60	NRC .10 / SAA .08

PHIFER
INCORPORATED

P. O. Box 1700 • Tuscaloosa, Alabama 35403-1700 USA
Phone: 205.345.2120 • FAX: 205.391.0799
Toll Free USA/Canada: 1.800.221.5497
phifer.com • ISO Registered



© SheerWeave is a registered trademark of PHIFER INCORPORATED.
© MICROBAN is a registered trademark of Microban Products Company.
™ UL, the UL logos and the UL mark are trademarks of UL LLC.
Photo courtesy of Draper INC., Spiceland, Indiana, USA.
© PHIFER INCORPORATED V19 070319 3033846