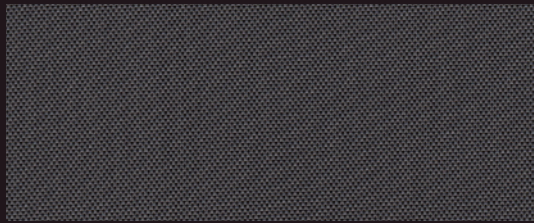


E Screen™ & E Screen™ WITH KOOLBLACK™ TECHNOLOGY

High Performance | 0.5% 1% 3% 5% openness



0.5% A30A01 | Charcoal/Grey



1% 030001 | Charcoal/Grey



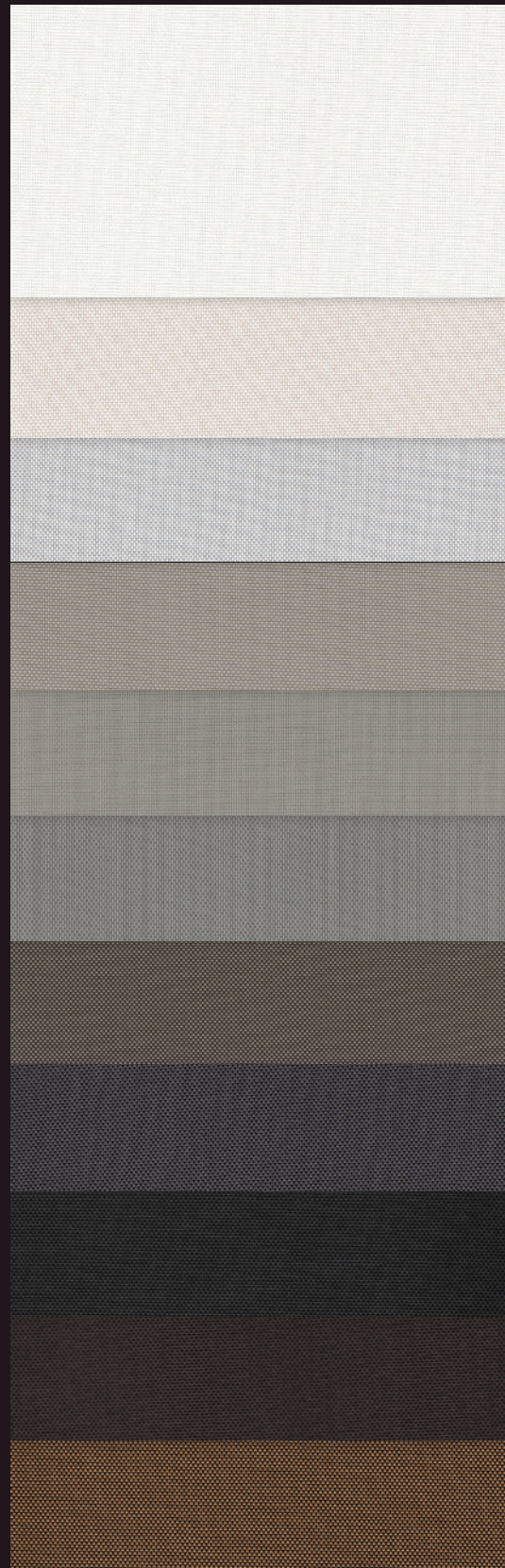
3% 030001 | Charcoal/Grey



5% 030001 | Charcoal/Grey



10% 030001 | Charcoal/Grey



002002
White/White

002020
White/Linen

002007
White/Pearl

007020
Pearl/Linen

007007
Pearl/Pearl

007001
Pearl/Grey

00M122
Charcoal/
Grey-Stone*

030001
Charcoal/
Grey*

030030
Charcoal/
Charcoal*

030061
Charcoal/
Cocoa*

030071
Charcoal/
Apricot*

*Available in KOOLBLACK® Technology.
Fabrics sampled on the waterfall are 3% openness.

Fabric Specifications

Fabric Style	UV Blockage	Composition	Standard Roll Length	Warranty
Basketweave	Approximately 90%-99.5%	36% Fiberglass, 64% Vinyl	34 ly (31 lm)	5 Year Exterior 10 Year Interior

E Screen™

Available Colors

White/White	White/Linen	White/Pearl
Pearl/Linen	Pearl/Pearl	Pearl/Grey
Charcoal/Grey-Stone	Charcoal/Grey	Charcoal/Charcoal
Charcoal/Cocoa	Charcoal/Apricot	

Openness	Item No.	Available Widths			Weight oz/yd ² (±5%)	Thickness inches (±5%)
		78"	98"	122"		
0.5%	007500			•	13.5	0.023
1%	007501	•	•	•	13.3	0.020
3%	007503	•	•	•	11.6	0.017
5%	007505	•	•	•	10.7	0.016
10%	007510	•	•	•	10.3	0.020



0.5%

A30A01 | Charcoal/Grey



1%

030001 | Charcoal/Grey

E Screen™ with KOOLBLACK™ TECHNOLOGY

Available Colors

Charcoal/Grey-Stone	Charcoal/Grey	Charcoal/Charcoal
Charcoal/Cocoa	Charcoal/Apricot	

Openness	Item No.	Available Widths			Weight oz/yd ² (±5%)	Thickness inches (±5%)
		78"	98"	122"		
0.5%	007700			•	14.6	0.025
1%	007701		•	•	12.9	0.021
3%	007703		•	•	11.3	0.020
5%	007705		•	•	10.6	0.019
10%	007710		•	•	10.6	0.021



3%

030001 | Charcoal/Grey



5%

030001 | Charcoal/Grey



10%

030001 | Charcoal/Grey



Looking for fenestration data?
Scan here for complete fabric resources.

MermetUSA.com



Mermet Corporation

5970 N. Main Street
1.866.902.9647

Cowpens, SC 29330
info@MermetUSA.com

Product performance and specification data is subject to change, visit www.Mermetusa.com for the most current information