

Sustainable | 1% 5% openness



GreenScreen Revive®

Specifications

Item Number
 Product Category
 Fabric Style
 Openness Factor
 Composition
 UV Blockage
 Standard Packaging
 Width
 Weight
 Thickness

1% 002501 | 5% 002505
 Sustainable
 Warp Knit
 1% & 5%
 100% Polyester | 89% Recycled Content
 Approximately 95%-99%
 Rolls of 50 ly (46 lm)
 118 in (300 cm)
 1% 5.87 oz/yd² (199 g/m²)±5% | 5% 5.01 oz/yd² (170 g/m²)±5%
 1% 0.019 in (0.49 mm)±5% | 5% 0.017 in (0.44 mm)±5%

Classifications

Fire Classifications
 Fungal Resistance
 Environment
 Acoustic

NFPA 701-10 TM#1, California U.S. Title 19,
 CAN/ULC-S109-03 Small & Large Flame Test
 ASTM G21
 RoHS - Lead Free, GREENGUARD Gold, Cradle to Cradle Certified™- Bronze
 1% NRC 0.20, SAA: 0.22 | 5% NRC 0.15, SAA: 0.14

Fabrication

Cutting: Cold, Ultrasonic, Crush | **Welding:** Radio Frequency, High Frequency, Impulse, Hot Air or Wedge
 May require the use of welding tape. Please contact Mermet for more information regarding our welding tape product line.
 We recommend testing all cutting and welding methods prior to use to confirm they meet your individual fabrication specifications.



ITEM COLOR

A00030	Onyx
000022	Stone
000001	Pewter
000015	Dusk
000071	Suede
000055	Mushroom
000020	Linen
000010	Sand
000002	White

Warranty

Care & Handling

FABRIC										FABRIC + GLASS			
thermal						optical				commercial		residential	
Rs %		As %		Ts %		Rv %		Tv %		SHGC % Improvement		SHGC	
1	5	1	5	1	5	1	5	1	5	1	5	1	5
34	31	49	47	17	22	11	10	5	9	18	16	0.51	0.56
52	49	24	24	24	27	44	43	17	20	34	32	0.42	0.45
43	37	38	37	19	26	25	23	8	14	24	21	0.46	0.52
36	31	50	47	14	22	11	10	2	8	18	16	0.50	0.56
39	35	42	40	19	25	20	18	7	13	21	18	0.48	0.53
46	42	34	31	20	27	32	31	10	18	29	24	0.45	0.49
58	52	17	16	25	32	55	50	20	28	42	34	0.38	0.44
61	54	13	11	26	35	60	54	23	33	45	37	0.36	0.43
66	56	6	6	28	38	68	58	27	37	50	39	0.33	0.42

5 Year Interior

Regular light dusting with a feather duster is suggested. A hand-held vacuum with low suction may also be used. When vacuuming, avoid pulling or stretching the fabric. Rigorous vacuuming is not recommended since this could distort the fabric. Alternatively, dirt and debris can be blown away using compressed air or hand-held air dryer on the cool setting.

The fabric performance tests were conducted in accordance with ASTM E891 & ASTM E903-96: Total Solar Transmittance (Ts), Total Solar Reflectance (Rs), Total Solar Absorptance (As), Visible Reflectance (Rv), and Visible Transmission (Tv). Glass performance tests for Solar Heat Gain Coefficient (SHGC) were conducted using the Lawrence Berkeley National Laboratory Window NFRC certified software. SHGC % improvement for commercial applications is based on a standard commercial glass makeup of Double Glazing 6 mm / 1/2" air / 6 mm with low E on surface #2. SHGC for residential applications is based on a default residential glass makeup of 3 mm clear glass / 1/2" air / 3 mm clear glass. Results for SHGC were obtained using the center of glass. Acoustical performance was tested in accordance with ASTM C423-09a: NRC is Noise Reduction Coefficient, SAA is Sound Absorption Average. For up-to-date test results, performance specifications and larger samples, contact the Mermet Technical Department at: www.mermetusa.com.

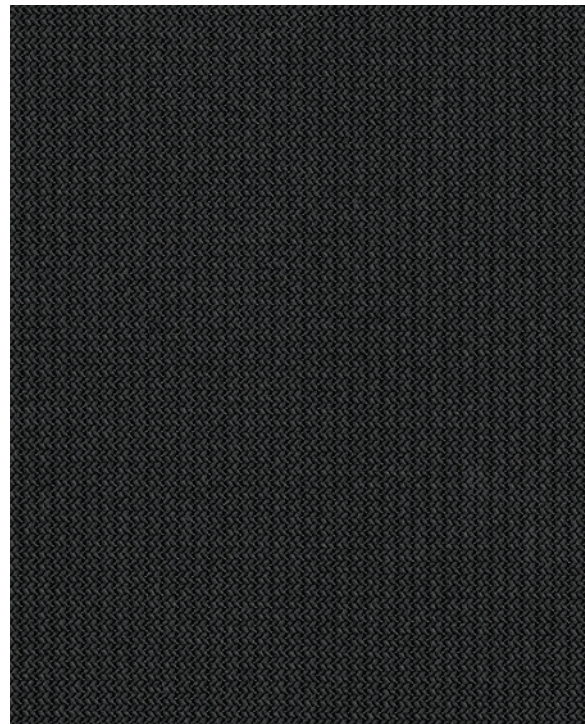
Mermet Corporation
 5970 N. Main Street ■ Cowpens, SC 29330
 Ph 1.866.902.9647 ■ info@mermetusa.com

mermetusa.com



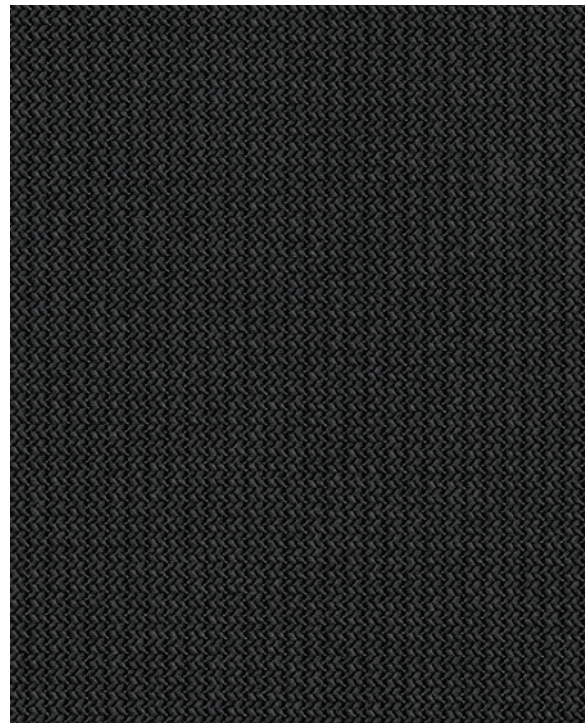


Sustainable | 1% 5% openness



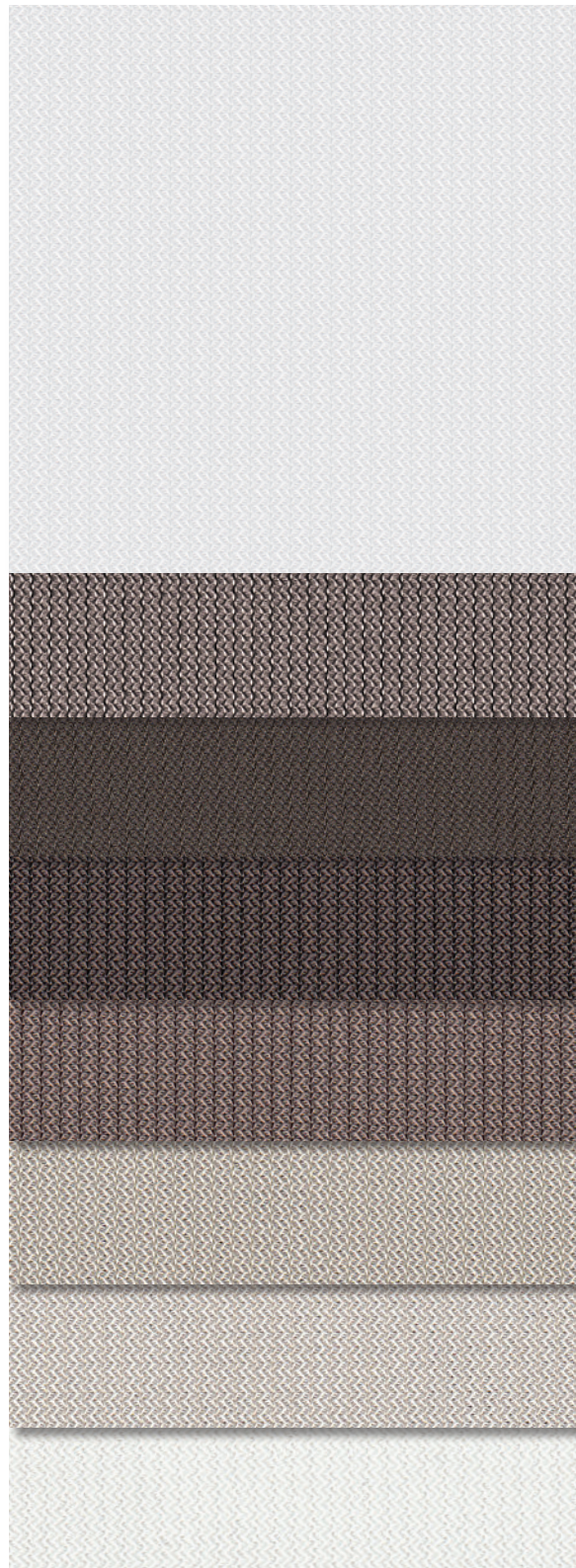
1%

A00030 | Onyx



5%

A00030 | Onyx



000022
Stone

000001
Pewter

000015
Dusk

000071
Suede

000055
Mushroom

000020
Linen

000010
Sand

000002
White

Recyclable Designer Shade Fabric

The flagship product of Mermet's recyclable fabric offerings, GreenScreen Revive warp knitted fabrics are made of 100% PVC-free polyester and contain up to 89% Repeve® fibers. The recycled content within the fibers used to make GreenScreen Revive are derived from post-industrial plastic waste and post-consumer repurposed water bottles.



- 100% Recyclable-Zero Waste Product
- PVC-Free
- Cradle to Cradle Certified™ - Bronze
- Contains up to 89% Repeve® fibers, made from 100% recycled post-industrial and post-consumer plastic waste
- Offered in 2 openness factors and 9 designer colors
- Made in the USA
- Red List compliant with HPD available

Fabrics sampled on waterfall are 5% openness.

Printed on recycled paper.